

IN TOUCH



SCC MONTHLY NEWS - ISSUE 121
APRIL 2026





Contents

April 2026

Our cover features the Cross. A reminder of the death and resurrection of Jesus.

Features

LUNCHEON PHOTOS

Page 5

INSURANCE WORKS BBQ

Page 6

MARIAN GROVE AGM

Page 7

MATER MATTERS

Mater Christi community events/news
Pages 10-13

MARIAN GROVE NEWS

News and happenings around Marian Grove
Pages 14-15

DONOVANS

News from Donovan's Link Cafe
Page 16

THE LINK

Page 17

COMMUNITY CORNER

SCC community events/news
Page 18-19

JUST FOR FUN

Comic, Sudoku and Word Search
Pages 24-25

Regular Contributions

Residents

GROWING OLDER GRACEFULLY

Sr Anne Henson
Page 2

Regular Contributions

Staff

IN THE SPIRIT - Matt Digges
Page 3

VILLAGE NEWS - Karen Martin
Page 4

SAWTELL HOME CARE UPDATE
Page 8

MATER CHRISTI UPDATE
Page 9

FROM OUR CEO - Michael Darragh
Page 26

Church Times

Our Lady of the Way Chapel

Wednesday

9.30am
Mass

Friday

9.30am
Mass

Sunday Ecumenical Service

10.00am
The 1st and
3rd Sundays



Marian Grove Office will be closed
over the Easter Break on

**Good Friday 3rd April
and Easter Monday 6th April**

Marian Grove office will also be
closed on

Anzac Day Monday 27th April

Anzac Day

Saturday 25 April
ANZAC Day Service
11am

at the Anzac Garden





GROWING OLDER GRACEFULLY SR ANNE HENSON

In Lewis Carroll's *Through the Looking Glass*, Humpty Dumpty said; "A word means what I want it to mean" but then Humpty Dumpty had a great fall didn't he? Of course, words can mean different things for different people but for the sake of clear communication we need to understand one another.

Let us take the word RESPECT for example. It is a word we hear often and expect to encounter in our interactions with others. If we lived in Japan, we would certainly recognise respect in their traditional ojigi, a gesture performed by bending from the waist while keeping the back straight. This can express a greeting, an apology or "thank you".

Namaste is also a gesture of respect. It originated in Hindu culture and has been adopted by Buddhists. It takes the form of a slight bow with hands joined in front of one's chest. It has a spiritual component namely recognising the presence of the Holy Spirit in each another. It is sometimes seen in yoga and in the religious services of Christian faiths as an expression of "peace be with you". Namaste is a meaningful gesture that goes beyond politeness, even friendliness and shows deep respect and a spiritual connection.

Australians have their own way of expressing respect. A handshake is a formal greeting. A pat on the back and "G'day mate" are our everyday way of recognising the presence of another. These greetings come naturally to us, a spontaneous acknowledgement of the other person before us.

Every greeting is an opportunity to show respect by acknowledging the presence and dignity of another person. Most people do this by smiling or a wave of the hand. It is simple enough, but it shows respect. We respect others when we listen attentively to what they have to say, welcome visitors to our home and newcomers to our neighbourhood. We value punctuality and good manners as expressions of mutual respect.

Respect influences every aspect of our interaction with others. We owe it them to be honest, grateful, kind, polite and forgiving. Respectful people observe one another's personal boundaries. They really listen to one another's opinions and when they differ, they do so with respect. They are not racist or sexist, accepting the inherent dignity of individuals. They respect the rights of others to be unique. They also respect the rights of animals and planet earth.

The Golden Rule is about respect. "Do to others what you would have them do to you". (Matt 7:12). Respect cuts both ways. Self-respect means that we behave with dignity and honour and in so doing, **we also respect one another.**

Sr. Anne Henson
Marian Grove Resident

**G'DAY
MATE!**





IN THE SPIRIT

MATT DIGGES

The last two millennia have seen humans become increasingly physically developed. Becoming stronger and smarter, we have been able to interact more effectively with the physical world. Incredible knowledge is now available on our smartphones.

As I age and become a little bit wiser I dare to hope that our world also learns from our past. After all, in 1915 Philosopher George Santayana famously wrote: *those who cannot remember the past are condemned to repeat it*. Reacting to the reality of the new war in the Middle East, Pope Leo stated: *Violence can never lead to the justice, stability, and peace that the people are waiting for*. I looked with horror at social media posts of the war that spliced action movie clips in with real footage. Baise Cupich, Archbishop of Chicago, lamented: *A real war with real death and real suffering being treated like it's a video game - it's sickening*.

How is it that we have so much yet have learned so little?

The dysfunction of our world is not new, nor has it exacerbated overnight. Since the first Easter, each year has presented a development of a previous global challenge. The death of Christ is the choice of sacrifice over violence.

The most powerful world leaders seem to have a learning difficulty that can only be overcome by the sacrifice of ordinary people living lives of faith and hope. They cannot see what Ukrainians have been witnessing for years; you cannot bomb ordinary people into submission.

The Resurrection celebrated on Easter Sunday witnesses to the victory of hope over all else. It is time for us, the ordinary people, to teach by living awe-inspiring lives of sacrifice.

Matt Digges

Director of Mission





VILLAGE NEWS

KAREN MARTIN

The Wollemi Pine sapling previously located at the front of the Recreation Centre experienced significant growing challenges. As a result, it has been removed and replaced with a new, healthy specimen.

The new Wollemi Pine has been planted beside the Alex Floyd Memorial on Sea Eagle Drive. Relocating the tree to a more suitable environment will help ensure it thrives and grows to its full potential.



Our complimentary BBQ held on Friday 27 March was very well attended. Residents enjoyed a selection of tasty BBQ treats with fresh salads, followed by delicious cake. The event provided a wonderful opportunity to show our appreciation to the Marian Grove community for your patience and understanding during the past four years of insurance repair works.

We have received questions regarding our out-of-hours process. We have partnered with Virtual Office to manage after-hours requests. This service is intended for emergency situations only. Virtual Office will arrange for trades people to attend urgent issues such as:

- Blocked toilets
- Loss of hot water
- Burst pipes
- Power outages
- Electrical issues affecting main appliances

Non-urgent maintenance matters should continue to be reported to Reception and will be attended to by our maintenance team during office hours.

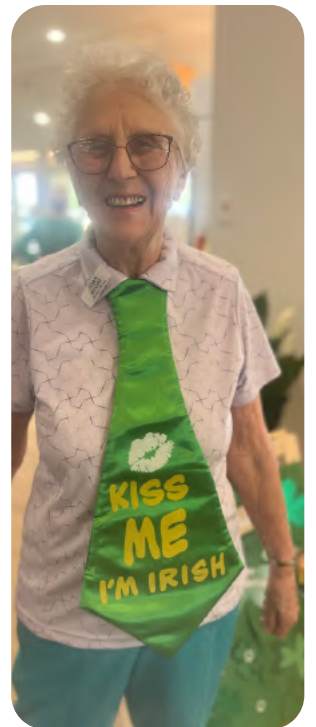
For unusual situations that fall outside standard trade services, the Village Manager is contacted to provide further direction.

Marian Grove Administration Office will be relocating to Office 151 following our return from the Easter break. We look forward to welcoming our valued residents into this newly refurbished space.

Wishing everyone a very blessed Easter. May this special time bring you moments to reflect and to appreciate our wonderful community, close friendships, and loving families.

Karen Martin
Village Manager

March Luncheon



Insurance Works Celebration



Marian Grove Retirement Village

Residents' Committee - Annual General Meeting Notice

Marian Grove Residents' Committee provides a channel for communication between Village residents and Management.

Each year the Committee holds an Annual General Meeting (AGM) where residents are invited to raise issues affecting the Village and where the results of the election for Committee members are announced.

Date: Friday, 15 May 2026

Time: 10.30am

Agenda Items

Residents are invited to submit agenda items for discussion. These can be given to a Committee member or placed in the Committee mailbox in the Recreation Centre.

Questions are requested in writing where possible, although questions may also be taken from the floor during the meeting.

Deadline for agenda items: 13 May 2026

Committee Elections

Nominations are now invited for the Residents' Committee.

- There are seven Committee positions, and all positions are open for election.
- **Nomination forms will be available from the Recreation Centre and Marian Grove Reception from 20 April 2026.**
- Nominations close: 28 April 2026.

If more than seven nominations are received, a vote will be held to determine the Committee members. If seven or fewer nominations are received, the nominated individuals will be declared elected.

All residents are warmly encouraged to participate.

Marian Grove Residents' Committee

SAWTELL HOME CARE UPDATE

In the run up to Easter, the growth of Sawtell Home Care has continued slowly, requiring us to employ three new Care Workers. Khushi, Muna, and Arun have all begun this year. They are all experienced and are sharing their skill and care with our participants. Additional Care Workers are being recruited to address the needs of new participants.

In February we said *au revoir* to Rob Wilson, our foundational Home Care Manager. His gentle person-centred guidance has launched Sawtell Home Care on firm foundations. His further studies in psychology with an emphasis on ageing will benefit the knowledge base and practical care of older people in our society.

The process of recruitment of a new Home Care Manager is progressing towards appointment. Until then, Matt will remain the Acting Manager, working with the administrative team of Nicole and Vanessa, assisted by the clinical skills of Peter, Catherine, and the skills of our eleven care workers. We are fortunate to have a capable, caring, and professional team.



**SAWTELL
HOME CARE**



MATER CHRISTI UPDATE



Easter will see the transition of Mercy Kurinyepa from the role of Director of Nursing in Mater Christi. Mercy has been a crucial member of the Mater Christi Team since her arrival in Australia from Zimbabwe via New Zealand with her husband Evans and three children.

Over the last five years she has met the challenge of leading the Mater Christi team in a gentle and respectful way that complemented her professional skill. We are grateful for the generous contribution of Mercy to the lives of residents, families, and staff.

Mercy, your smile lights up the room and your listening ear has been appreciated by many. Thank you for living and modelling our vision and mission.

As Mercy moves, Michael has announced the appointment of Colin McDonald to the role of Care Services Manager (formerly titled DON) at Mater Christi.

Starting his career as an enrolled nurse, Colin's professional development journey has included a registered nurse qualification

for 25 years, with additional training and qualification in Human Resources, Leadership, Training and Assessment, Infection Prevention and Control Lead Training among other courses.

Colin has been a Residential Services Manager and Clinical Care Manager at a number of facilities.

He has also had experience in quality auditing and strengthened standards implementation so comes to us with a wealth of experience to share.

Colin will take up his duties on April 21st. In the interim, Natalie and the CORE team will provide direction and leadership for implementation of the Mater Christi Clinical/Operational Governance Improvement Plan with support from Mercy, Linnie, our clinical team and the Executive.

Catering led by Sandy and Housekeeping, and Maintenance Services, led by Ali, will continue to collaborate closely with the Care Leadership Team, however, they will report directly to the Executive Team.



MATER MATTERS

St Patricks Day

Residents came together for a joyful celebration of St Patrick's Day, filled with music, movement, and plenty of Irish spirit.

The highlight of the day was a lively performance by talented Julie Ross dancers, whose energy and routines had everyone tapping their feet and clapping along. This was beautifully complemented by The One Foot in the Grove choir performance, with familiar tunes and uplifting songs that encouraged residents to sing along and enjoy the moment together.

The room was filled with smiles and laughter as we embraced the festive atmosphere. Events like these create meaningful moments of connection, bringing back fond memories while offering new experiences for all to enjoy.

A wonderful day was had by all, and we thank our performers and team for making the celebration so memorable.





MATER MATTERS

Harmony Week

We proudly celebrated Harmony Week with vibrant and heartwarming events that brought our community together.

Residents, staff and visitors enjoyed complimentary coffee and delicious cupcakes, creating a welcoming space to connect, share stories, and celebrate the diverse cultures that make up our home. The atmosphere was filled with warmth, laughter, and a true sense of belonging.

A special highlight of the celebration was the launch of our very own cookbook. This meaningful project showcases a collection of cherished recipes contributed by residents, staff, and volunteers - each dish telling a story and reflecting the rich cultural backgrounds within our community.

The cookbook launch was a proud moment for all involved, recognising the time, care, and love that went into each contribution. It was wonderful to see everyone come together over food, sharing memories and traditions that span generations.

Thank you to everyone who contributed to the cookbook and helped make our Harmony Week celebration so memorable.



Together We Can



Please join our support group/information sessions to assist people living with Parkinson's.

What this group is about?

Social connection	Meeting with others who share similar experiences can help break down feelings of isolation.
Information	Support groups can provide information about living with Parkinson's, including resources and solutions to common problems.
Motivation	Support groups can provide motivation and inspiration to deal with lifestyle changes.
Mental health	Research has shown that participating in support groups can lead to lower levels of anxiety, depression, and social phobia.
Educational sessions	Support groups may include educational sessions by guest speakers.

Guest Speaker April 2026

Anne Ingles

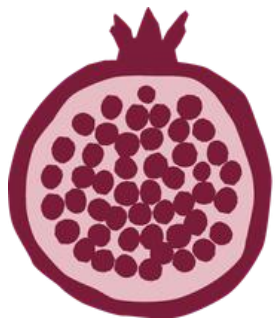
(Clinical Nurse Consultant psychogeriatric service)

15th April 2026

10.30am

Mater Christi Community Room

(All welcome, Residents, Staff, Families & Village)



MAGGIE BEER FOUNDATION

CREATING AN APPETITE FOR LIFE



The conclusion of our mentorship with the Maggie Beer Foundation was celebrated in the most fitting way - surrounded by delicious food, great company, and a shared sense of achievement.

Residents, staff, and our catering team came together to mark the end of this inspiring journey, with a special visit from Chef Matt from the Foundation. The atmosphere was filled with excitement as an incredible spread of food was prepared and enjoyed by all. From beautifully presented dishes to thoughtfully crafted flavours, the celebration truly reflected everything we have learned throughout the program.

This mentorship has been a valuable experience for our team, enhancing skills, confidence, and creativity in the kitchen while reinforcing the importance of nutritious, high-quality meals in aged care. Seeing our catering team bring these learnings to life was a proud moment for everyone involved.

A heartfelt thank you to the Maggie Beer Foundation, Chef Matt, and our dedicated catering team for their passion and commitment. This celebration was not just the end of a program, but the beginning of a lasting impact on how we create and share food within our community.

Sandy and Tia





MARIAN GROVE NEWS

Residents are encouraged to wash their cups manually after small activities at the Recreation Centre. The dishwasher uses approximately 10 litres of water per cycle, so it should only be used for larger activities when necessary.

If you do use the dishwasher, **please ensure it is emptied after use.**

The dishwasher tank retains dirty water after each wash cycle and **must be drained to maintain proper hygiene and function.**

If it is not drained, the system will not operate with the correct heating process.

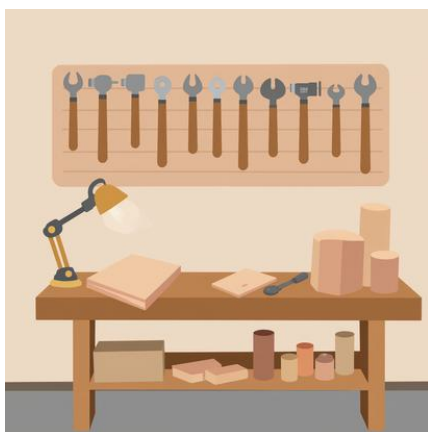
To drain the dishwasher:

- Press the down arrow button until the DRAIN screen is present.
- Close the dishwasher hood and it will drain.



Sawtell Catholic Care is proud to support the Little Wings Charity. Little Wings provides vital transport for regional children for treatment in major hospitals. We have a number of Little Wings bins around the Village to collect cans and bottles. 20 bottles equals 1 litre of Fuel. We appreciate your support in this initiative.

Workshop Repairs



The Men's Workshop offers basic timber and furniture repair services.

Visit the Workshop for more information.

Barry's Knife Sharpening



Contact Barry or drop into the Workshop to have your knives, scissors or secateurs sharpened.



MARIAN GROVE NEWS

Residents Lunch

14 April 2026
12 Noon
Recreation Centre

MENU

Roast Lamb with gravy, roast potato and vegetable medley

White chocolate tart and ice cream

\$16

Please purchase your ticket from Reception prior to 10 April 2026
Transport is available

Raffles 3 for \$5

Shopping Bus Time Table

Monday

Toormina Shopping Centre 9.00am - 11.00am
Toormina Shopping Centre 10.00am -12.00pm

Wednesday

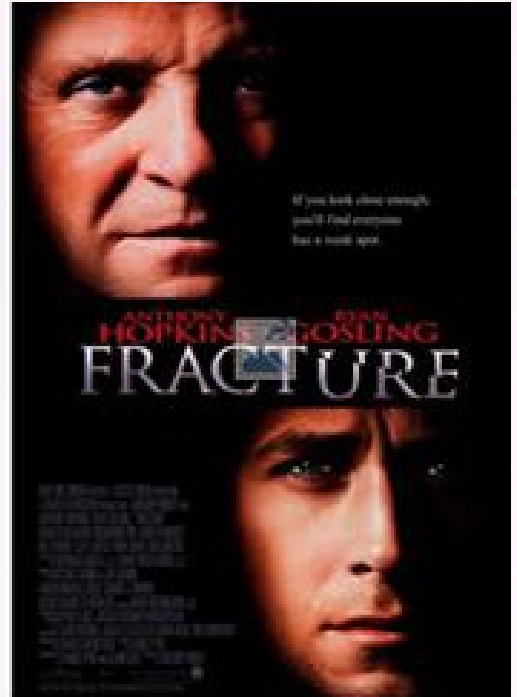
Toormina Shopping Centre 9.00am - 11.00am
Toormina Shopping Centre 10.00am -12.00pm

Friday

Coffs CBD or Park Beach Plaza
9.00am returning 12 noon
Park Beach Plaza Shopping Centre
10.00am returning 1.00pm
via Cunningham's Bananas



Movies



**Saturday
11th April 2026**

1.30pm
Recreation Centre

\$3

Lucky door prize
and afternoon tea

For enquiries contact
Barbara Smith 0401 781 706

February Sudoku solution

4	3	7	8	6	1	5	9	2
6	1	8	5	9	2	3	4	7
2	9	5	4	7	3	8	6	1
1	5	3	7	2	6	4	8	9
7	4	6	3	8	9	2	1	5
8	2	9	1	5	4	6	7	3
9	8	2	6	3	7	1	5	4
3	6	4	9	1	5	7	2	8
5	7	1	2	4	8	9	3	6

Sudoku provided by SudokuBliss.com

Hello From Donovans

It's hard to believe we are already in April! As we move into the cooler months, we look forward to welcoming all residents over to enjoy a coffee, a bite to eat and some friendly company.

Please note the following **public holiday closures** this month:

- Friday 3 April - Closed for Good Friday
- Monday 6 April - Closed for Easter Monday
- Monday 27 April - Closed for ANZAC Day Public Holiday

We have also updated our trading hours and will now be open daily from 7.30am - 2.00pm.

We encourage all residents to pop over and grab a loyalty card. Throughout the year we'll be running exclusive specials and offers, and these perks will be available only to our loyalty members.



April Loyalty Special

Enjoy a Scone & Coffee Deal for \$10, which includes:

- 1 freshly baked scone with jam and cream
- Your choice of coffee

Happy Hour | 12pm - 2pm Daily

Available Monday - Sunday.

Join us daily for a delicious lunch and enjoy Happy Hour from 12-2pm. The perfect excuse to gather friends and enjoy a leisurely meal.

\$8 House Wines (Piccolos)

Piccolo Selection Available:

- Long Row Cuvée Brut 200ml
- Villa Jolanda Prosecco 200ml
- Angove Organic Rosé 187ml
- Long Row Moscato 187ml
- Long Row Pinot Grigio 187ml
- Long Row Chardonnay 187ml
- Bridgewood Sauvignon Blanc 187ml

Beer Selection: All Beers \$8

- Great Northern Super Crisp 3.5%
- Corona 4.5%
- Stone & Wood Pacific Ale 4.4%
- King Tide Crispy Larger 3.8%

We look forward to seeing you throughout the month for a catch-up and a great coffee!

Thank you
DONOVANS Team



Follow us on socials
@donovanslink & @chefmattdonovan

At The Link



The Shed Men's recent performance in the Link Gardens was a wonderful highlight of this year's Seniors Week Festival, bringing residents and families together in a vibrant celebration of music, connection, and community.

Set amongst the beautiful surroundings of our very own gardens, the morning was filled with live entertainment that had toes tapping and hands clapping. Residents delighted in the atmosphere, with many singing along to familiar favourites and enjoying the chance to be outdoors in such a lively setting.

The performance created a warm and inclusive space where everyone could come together to celebrate the contributions and spirit of our seniors. Laughter, music, and shared moments made the event truly special, highlighting the importance of connection and joy in everyday life.

It was a memorable celebration that will be cherished by all who attended.

The Link grounds are closed from 3pm daily with the gates locked. If you do see the gates are unlocked after this time, it is for a private event.



Community Corner

Dementia Support Group All Welcome



We are pleased to introduce our new Dementia Support Group, held the third Friday of each month at 10.30am for one hour in the Community Room at Mater Christi.

Our first session will be on **Friday 17th April**. This group is open to residents living with dementia, as well as their family members and carers. Each session will explore a different topic, with guest speakers joining us on selected months, to help build understanding, confidence, and support for everyone involved.

Whether you are seeking information, connection, or simply a compassionate space to share experiences, we warmly invite you to join us.

*If I can stop one
heart from breaking*

If I can stop one heart
from breaking,
I shall not live in vain;
If I can ease one life the aching,
Or cool one pain,
Or help one fainting robin
Unto his nest again,
I shall not live in vain.

Emily Dickinson

English Literature

— by Deepika Verma —

I had this beautiful quote from one of my favourite poets, Emily Dickinson on my desk when I was teaching to remind myself that teaching was not simply the imparting of knowledge, but about the care of the children in front of me. Sondra Donohue





Community Corner

I have an illness

I have an illness, do not be ashamed.

Hold my hand, sit with me, and talk
As sometimes I may remember you.
Voices and faces that once were familiar
Eventually I will recognise no more.

All of this may be difficult for you,
when nodding and smiling may be all I can do.

I may not say it, but I still love you.

Little by little I'll fade away

Love and respect me whilst I'm still with you,
Never forget me when I have gone.

Even on the days when the visits upset you,
Stay a while and be with me, please.

Someday I'll only be in the stars and your dreams.

By Simon Ingram-Hawkes



Residents enjoyed a performance
by Mei Wei Lim and friends on
Saturday 21st March.



A reminder for residents to
be mindful of security, by
locking car doors and
homes. If you notice
anything report it to the
local Police Station.

02 6691 0799



FOR SALE
MOBILITY SCOOTER

Excellent Condition,
Reliable

\$1,000

Includes cover and
battery charger.

Contact Peter Patton
0400 840 806





Community Corner

April BBQ

Sunday 26th April

12pm

in the Recreation Centre.

Please RSVP by putting your name down in the Recreation Centre.



There is no Chair Yoga

2nd April

9th April

16th April

Chair Yoga classes return 23rd April

PAPER CRAFT



Thursday mornings
in the supper room
Between 9.30am and Noon



Paper Craft operates during NSW school terms.
Term 2 will begin on Thursday 23rd April 2026

Gold coin donation - this goes to purchase any resources that are needed

There are plenty of resources available to use

We welcome new participants - scrapbooking, card making, colouring in, creating with paper or card, gift making etc.

Enquiries - Joan Kirk
6658 1621





SEEDS OF GRACE

You are warmly invited to attend our group which builds connections, gives support and meets us where we are in our lives.

WHERE: The Link – Reflections Bungalow

WHEN: Friday 10th April 2026

TIME: 10:30am – 12pm

Morning Tea is provided.

RSVP to Kath, Senior Pastoral Assistant 0475214834 or kathrynbutcherine@scca.net.au and for any enquires

NEW SHOOTS

An environment for those experiencing grief, loss and change in life and for those who have lived experience to share with others.

Where: The Link – Reflections Bungalow

When: Friday 10th April 2026

Time: 1pm – 2:30pm

Afternoon tea provided.

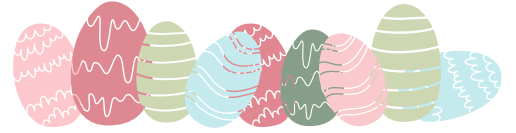
RSVP Kathryn, Senior Pastoral Assistant

Call 0475 214 834

Email kathrynbutcherine@scca.net.au for more information



Wishing our Mater Christi and Marian Grove Community a very Happy Easter.



Easter Services - Our Lady of The Way Chapel

- Wednesday 1st April - Mass 9.30am
- Wednesday 1st April - Second Rite of Reconciliation 10.15am
- Friday 3rd April - Good Friday - Celebration of the Lord's Passion 3.00pm
- Sunday 5th April - Easter Sunday - Anglican Holy Communion 10.00am





Marian Grove

Important Information

Safety Link Devices

Please remember to test your Safety Link pendant monthly.

Instructions to test:

(a) Upon installation of your new Safety Link device by staff you will be given a date to test your unit each month.

(b) When this date occurs press the grey button on your pendant.

(c) Safety Link will then ring back through the white box device to confirm that the alarm has come through.

(d) You have then completed the testing and no further action is required.

(e) In the event of a medical emergency press the grey button on your white pendant and Safety Link will contact you through the speaker device to determine if you require medical assistance.

(f) Please note that the Safety Link pendant is waterproof and can be worn in the shower.

Marian Grove Resident Medical Information

If you activate your medical response pendant and the ambulance is called, vital emergency information paperwork should be available behind your front door.

This information provides the hospital with your personal details, current medication and Medicare number.

It is important to keep this information up to date and any changes can be made by contacting Marian Grove Reception 6653 1241.

Transport Bookings

Vehicles can be booked for medical appointments only from 8.30am until 1pm Monday to Friday. Please contact Marian Grove Reception on 6653 1241 prior to the day of your appointment to request transport.

After Hours Maintenance

For any after hours maintenance emergencies please phone:

0417 468 043

(emergencies only)

For any Police emergency matters please phone:

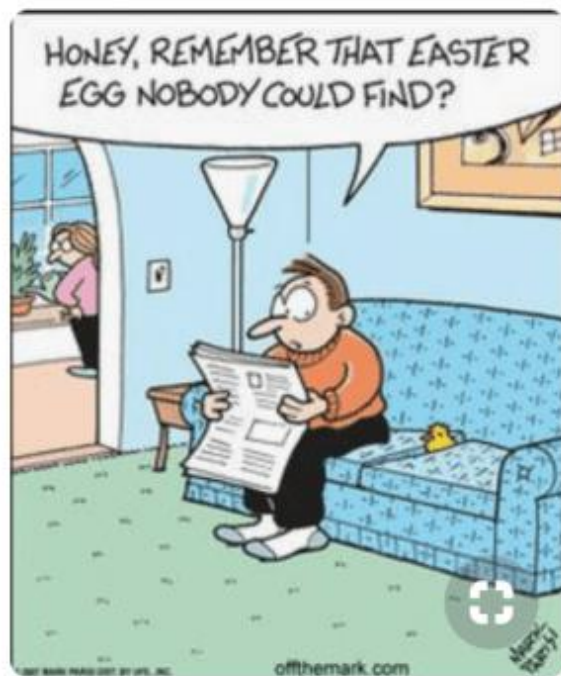
6691 0799

Grounds and Maintenance Requests

For any grounds or maintenance requests please phone Marian Grove Reception on **6653 1241**.

Please advise Marian Grove Reception when logging the request if there are specific days or dates you will not be home so this can be recorded with your request.

COMIC



SUDOKU

							4	
					4	9		
6	1		9		8			
4							5	2
	2	7	4		6	8	9	
8	9							6
			5		2		7	8
		9	7					
	3							

Sudoku provided by SudokuBliss.com



EASTER WORD SEARCH



EASTER
 BUNNY
 CHICK
 EGGS
 CARROT
 SPRING
 DAFFODIL
 LAMB
 BASKET
 HUNT
 TULIP
 CANDY
 DUCKLING
 RABBIT
 BLOSSOM

C	B	A	S	K	E	T	G	R	E	K	L	A	W	X
H	U	A	B	M	I	L	E	A	S	T	E	R	D	J
T	N	S	M	K	A	O	R	C	P	L	A	C	P	B
S	N	C	Y	Y	D	R	C	C	Q	R	K	U	M	L
C	Y	L	C	I	A	R	G	Q	L	A	M	B	K	O
A	A	H	E	W	F	O	D	S	T	O	A	A	C	S
R	G	N	O	F	F	I	A	S	S	G	Y	C	E	S
R	W	T	D	P	O	Q	J	N	W	A	E	K	X	O
O	A	C	S	Y	D	L	O	B	T	E	R	S	P	M
T	L	N	E	A	I	U	Y	K	I	N	O	O	T	R
R	I	V	N	K	L	I	C	N	N	M	I	S	C	E
A	C	I	C	K	M	A	I	K	T	E	E	P	R	K
X	J	I	J	F	Y	T	S	O	L	R	A	R	N	E
U	H	G	W	J	N	D	R	E	W	I	P	I	E	N
C	W	X	T	U	L	I	P	N	O	R	N	N	E	N
X	J	O	H	V	Z	I	C	O	J	E	G	G	S	A
U	Y	R	A	B	B	I	T	F	I	J	P	V	E	B
X	J	D	O	F	Z	I	C	B	J	W	E	S	T	S



WWW.SEASIDESUNDAYS.COM



From our CEO

Courage, Love, Respect, Justice

Dear residents, families, friends and staff,

We are now well into the new year and are delighted to celebrate the completion of the roof repairs, a project that has been part of our lives for the past four years. The silver lining is that these new roofs should serve our community well for another 50 years.

I am pleased to share that the Development Application (DA) for the Village Recreation Centre is progressing well, with Council now having requested payment. This is a milestone, and I look forward to keeping you updated. In addition, the Villa Maria affordable housing redevelopment DA has now been formally submitted to Council, marking another important milestone in supporting future community needs.

April is a month filled with meaningful celebrations and opportunities to come together. Most notably, we celebrate Easter, which falls in early April this year. Easter is a special and sacred time in our community, symbolising hope, renewal, and new life. It is also a time to give thanks for the sacrifices others make for us and to reflect on the values of compassion, service and care.

We all look forward to sharing this special time together across our village.

Other special dates to note in your calendar:

Daylight Saving Ends (Sunday April 5th) - turn back the clock 1 hour.

World Health Day (April 7th) - a reminder of the importance of wellbeing and the care we provide to one another each day, and the caring ministry of our staff to the frail and vulnerable people in our community.

ANZAC Day (April 25th) - a National Day of Remembrance, when we honour the courage, service, and sacrifice of our veterans, and reflect

on the resilient modern society and community their personal sacrifice has made possible.

Each of these events, both joyful and reflective, help shape the rhythm of the month and offers opportunities for our connection, remembrance, and celebration.

I would like to recognise the academic success of Rob Wilson, who has relocated to Hobart for postgraduate studies. Sawtell Home Care has thrived under his management. We hope the wisdom and experience gained at SHC will inform his studies and lead him back to Sawtell!

And finally, I would like to extend my heartfelt thanks to Mercy Kurinyepa, our Director of Nursing at Mater Christi, who will be stepping down from her role from Easter to spend more time with her family. We sincerely acknowledge the dedication, leadership, and compassion Mercy has shown over the past five years. Her commitment to our residents and families has been truly valued and I am sure she will be missed from her DON role.

Staff will be hosting a thank you afternoon tea for Mercy on Thursday April 2nd at 2.15pm in the Community Room at Mater Christi. All are warmly welcome to attend and join us in expressing our appreciation.

We are also pleased to welcome Colin McDonald to the Mater Christi team. He will commence as of April 21st. Colin brings many years of experience in the aged care sector, with a strong focus on improving quality and service delivery. We are confident he will be a wonderful addition to our community, and we encourage everyone to make him feel welcome.

Thank you, stay active and safe, and remember to spread kindness wherever you go.

Michael Darragh
Chief Executive Officer,
Sawtell Catholic Care

